

MADE TO PROTECT

**Satel**®



## FIRE ALARM SYSTEM

RELIABLE FIRE DETECTION AND ALARM SIGNALLING SYSTEM

**SATEL** fire alarm devices allow to implement reliable and modern systems responsible for fire safety.



A combination of 25-year experience in an electronic security systems industry with an advanced manufacturing technology enabled to design and put into mass production a number of devices which have a lot more features than products in their class available in the market so far. Full compatibility with the requirements of EN54 standards enables to use of SATEL devices in any case when required by specified regulations.

## Functionality of **CSP-200** and **CSP-100** series fire alarm panels

CSP-200 and CSP-100 fire alarm panels are intended for implementation of complex fire alarm signalling systems in small and medium buildings. CSP 100 range of panels offer all the most important functions required for certified fire signalling systems, ensuring easy installation and maintenance. The 200 series is additionally fitted with readable LCD display, thanks to which not only programming and periodical maintenance, but also everyday operation are considerably easier. The 200 series panels offer the most advanced features amongst conventional fire signalling systems.

## Wide range of necessary accessories

SATEL's product range of fire alarm signalling devices is truly complex. Therefore, besides the panels and associated devices, the range of products includes automatic fire detectors (smoke, heat, multi-sensor), manual call points and signalling devices. The offer is supplemented by auxiliary accessories, such as local fire alarm indicator or industrial base for automatic detectors, which makes installation of the detectors with the use of conduit pipes easier.



## Benefits for the user

The SSP Fire Detection and Alarm System (FDAS) meets the strict EN54 safety standards. It is managed by CSP fire alarm control panels (FACP) with an easy to read front panel for convenient system operation.

The FACPs have two non-volatile memories. One collects up to 8999 events (and alarms), while the other stores up to 9999 alarms only. These data will help you, for example, to identify errors when operating the system. They can be exported to common file formats (e.g. CSV).

The system can also be operated via the so-called panels (located up to 1 km away from the FACP). These devices, installed e.g. in the security building, provide access to all functions of the system and its current status data. The latter can also be tracked remotely - through the Java Web Start application. When the control panel works with the CSP-ETH Ethernet module, information is available in the Virtual PSP panel visible in the web browser.

Dust and dirt can interfere with proper operation of smoke detectors and smoke / heat detectors, and can trigger false alarms. That is why SATEL detectors are equipped with a system that detects soiling of the measuring chamber. Soiling is indicated by a LED and requires service personnel intervention. Such a solution significantly improves system efficiency and fire safety.

## Benefits for the installers

All the CSP fire control panels have been pre-configured so as to minimize the necessary programming of the system. With the factory default settings you get a well-functioning system, which only requires connection of devices to the appropriate inputs and outputs of the FACP. If necessary, you can change these settings and program the system using the panel buttons or the software installed on the PC.

The ability to configure additional relay inputs and outputs enables the FACPs of the CSP 100 and 200 series to perform additional functions beyond the local fire signaling. For example, they can work with an access control system or an audible warning system.

## Benefits for the service personnel

The CSP fire alarm control panels are characterized by many well thought-out solutions for easier periodical inspections and maintenance of the system. For example: access to the service mode is protected by a password entered using the keys on the FACP front panel, so you do not have to open enclosure of the device to change its configuration. In addition, the detector testing function makes this task easier to do by one person, and thus minimizes the number of people needed for efficient verification of the system.

The use of a single 12 V 17 Ah standard battery speeds up the diagnostics and reduces the cost of its replacement. Advanced tools that allow you to diagnose individual functional blocks of the system and thus make the identification of possible faults quick and easy are very helpful too. It is also worth mentioning the extensive event memory with the function of data exporting to common formats (e.g. CSV), which makes it easier to archive the registry of the entire system functioning.





**PSP-208**  
repeater panel compatible with CSP-208



**Virtual PSP**  
virtual repeater panel communicating over TCP/IP Ethernet



**CSP-ETH**  
TCP/IP Ethernet communication module



**CSP-208**  
8-zone, conventional fire alarm panel



**SPP-100**  
acoustic fire alarm signalling device, low base



**SPP-101**  
acoustic fire alarm signalling device, high base



**ROP-100/EU**  
conventional manual fire alarm for internal use



**ROP-101/EU**  
conventional manual call point for outdoor use



**WZ-100**  
external fire alarm indicator for automatic fire detectors



**WZ-100**  
external fire alarm indicator for automatic fire detectors



**WZ-100**  
external fire alarm indicator for automatic fire detectors



**DRP-100**  
point, optical (scattered light) smoke detector, intended for visible smoke detection



**DCP-100**  
point, rate-of-rise/fixed temperature heat detector



**DMP-100**  
multi-detector point sensor, optical smoke and heat detection



**PDB-100**  
industrial spacer for DB-100 detector base



**DB-100**  
DB-100 detector base



**DRP**  
fire detector



**DCP, DMP**  
fire detector





# fire signalling for your safety

## CSP 200 series

### Fire alarm control panels

- LCD display making everyday operation, maintenance and programming easier
- 8 detection zones in CSP-208 model, 4 detection zones in CSP-204 model
- support for remote repeater panel and virtual repeater panel
- 4 inputs with functionality defined by an installer
- 8 (CSP-208) / 4 (CSP-204) outputs programmed by an installer, allowing the communication with other systems
- operation of fire alarm and fault transmission devices
- built-in backup power supply interfacing with a single battery 12 V and AUX 24 V and 18 V power outputs
- have Certificate of constancy of performance no 1438-CPR-0317

## CSP 100 series

### Fire alarm control panels

- 8 detection zones in CSP-108 model, 4 detection zones in CSP-104 model
- support for remote repeater panel and virtual repeater panel
- 4 inputs with functionality defined by an installer
- 8 (CSP-108) / 4 (CSP-104) outputs programmed by an installer, allowing the communication with other systems
- operation of fire alarm and fault transmission devices
- built-in backup power supply interfacing with a single battery 12 V and AUX 24 V and 18 V power outputs
- have Certificate of constancy of performance no 1438-CPR-0317

## Repeater panels (PSP 200 and 100 series)

### Remote repeater panels for fire alarm control panels

- ability of full system operation from a remote place (up to 1 km)
- system operation in the same way as for front CSP panel
- built-in backup power supply interfacing with a single battery 12 V and AUX 24 V and 18 V power outputs

## Virtual PSP

### Virtual repeater panel for system state visualisation

- visualisation of alarms from individual zones
- monitoring of current faults list
- indicating of current disablement and test conditions



## CSP-ETH

### Communication module for a virtual panel

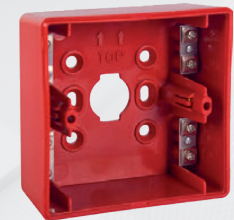
- compatibility with CSP-200 and CSP-100 series control panels
- compatibility with PSP-200 and PSP-100 repeater panels
- automatic IP configuration via DHCP
- powered directly by control panel or repeater panel



## ROP-100/EU • ROP-101/EU

### Manual call point

- hermetic enclosure for outdoor installation (ROP-101/EU)
- mechanical actuation memory
- LED actuation indicator
- restore after actuation with a special key
- have Certificate of constancy of performance no 1438-CPR-0342



## ROP-BT

### Junction box

- intended for use with ROP-100 manual call points
- PE terminal for connection of the cable shield
- additional terminals for connection of line wires



## SPP-100 • SPP-101

### Acoustic signalling device

- hermetic enclosure for outdoor installation (SPP-101)
- selection from 32 signalling sounds
- ability of triggering of two different sounds
- sound volume adjustment
- have Certificate of constancy of performance no 1438-CPR-0343



## WZ-100

### Alarm indicator

- optical signalling with use of LED diode
- aesthetic appearance
- easy installation



## DCP-100

### Point, rate-of-rise/fixed temperature heat detector

- thermal sensor with A1R characteristic, in accordance with EN54-5
- easy installation of the detector on the base
- operation of a local external alarm indicator
- have EC Conformity Certificate no 1438/CPD/0316



## DRP-100

### Point optical smoke detector

- unique Swirl chamber for improved smoke sensitivity
- detected test fires: TF2-TF5 and TF8
- precise filter made of stainless steel
- signalling of measurement chamber contamination
- easy installation of the detector on the base
- operation of a local external acting indicator
- have EC Conformity Certificate no 1438/CPD/0340



## DMP-100

### Point optical smoke and heat detector

- unique Swirl chamber precipitating smoke detection
- detected test fires: TF1-TF6 and TF8
- thermal sensor with A1R characteristic, in accordance with EN54-5
- precise filter made of stainless steel
- signalling of measurement chamber pollution
- easy installation of the detector on the base
- operation of a local external acting indicator
- have EC Conformity Certificate no 1438/CPD/0341



## DB-100

### Detectors base

- compatible with DMP-100, DRP-100 and DCP-100 detectors
- readable descriptions making connection in installation easier
- possibility of application of 10x20 conduit pipes



## PDB-100

### Industrial spacer for DB-100 socket

- easier mounting of DB-100 socket in installation with conduit pipes
- possibility of application of PG-16 glands and Ø16 conduit pipes
- external brackets enabling installation without perforation of the bottom



Effective fire detection at an early stage allows to limit its effects considerably





# MADE TO PROTECT

Budowlanych 66, 80-298 Gdansk, Poland  
tel. +48 58 320 94 00; fax +48 58 320 94 01  
e-mail: trade@satel.pl

www.satel.eu

## CHARACTERISTICS

### CSP 200 and 100 series

	200 series		100 series	
	CSP-208	CSP-204	CSP-108	CSP-104
Number of supervision zones	8	4	8	4
Number of alarm outputs	2	2	2	2
Outputs to Fire Alarm transmission devices/ Fault transmission devices	yes/yes	yes/yes	yes/yes	yes/yes
Number of programmable inputs	4	4	4	4
Number of programmable outputs	8	4	8	4
Display facilitating service	yes	yes	no	no
Compatibility with remote repeater panel	yes	yes	yes	yes
Compatibility with a virtual panel	yes*	yes*	yes*	yes*
AUX (12-18 V) power supply	yes	yes	yes	yes
AUX24 (24 V) power supply	yes	yes	yes	yes
Event memory capacity	8999	8999	8999	8999
Alarm meter capacity	9999	9999	9999	9999

\* The function requires connection of CSP-ETH module

## 30 YEARS OF EXPERIENCE

Professional protection of each type of premises, as well as people staying therein, through advanced, yet functional and cost-effective solutions – these few words may serve as the shortest description of the mission of SATEL, a manufacturer of security systems with involvement of 100% Polish capital. Due to integrity in business and a special emphasis on high quality and a wide range of products offered, the SATEL brand has been highly appreciated in the industry for 30 years.

This philosophy of management and hard work of more than 300 SATEL's employees produce tangible results. The wide range of over 400 offered products provides countless opportunities to create security, home automation, fire alarm, access control and monitoring systems, tailored to the individual needs of each user. At the same time, these systems meet all requirements prescribed by Polish and international regulations and industry standards.

Bringing the functionality of devices into line with current requirements and expectations of the market with the use of the latest technologies is one of the main objectives of SATEL. For this reason the design and production departments of the Company are continuously being modernized and expanded. A natural consequence of all actions aimed at the production of top-quality devices was the introduction of the quality management system conforming to ISO 9001 in 2002. Regardless of this certification, SATEL also carries out a full functional test of all products leaving the production line, thus ensuring reliability of the manufactured devices. Focusing on modern design and attaching importance to the highest levels of quality and functionality of its products, SATEL has gained many satisfied customers not only in Poland but also in more than 50 markets worldwide.

The manufacturer reserves the right to change the specification and technical data of devices.  
Images shown are for general information only and may differ from actual products.  
U-CSP-EN0220